

FREDERICK V. WATERMAN, Jr.

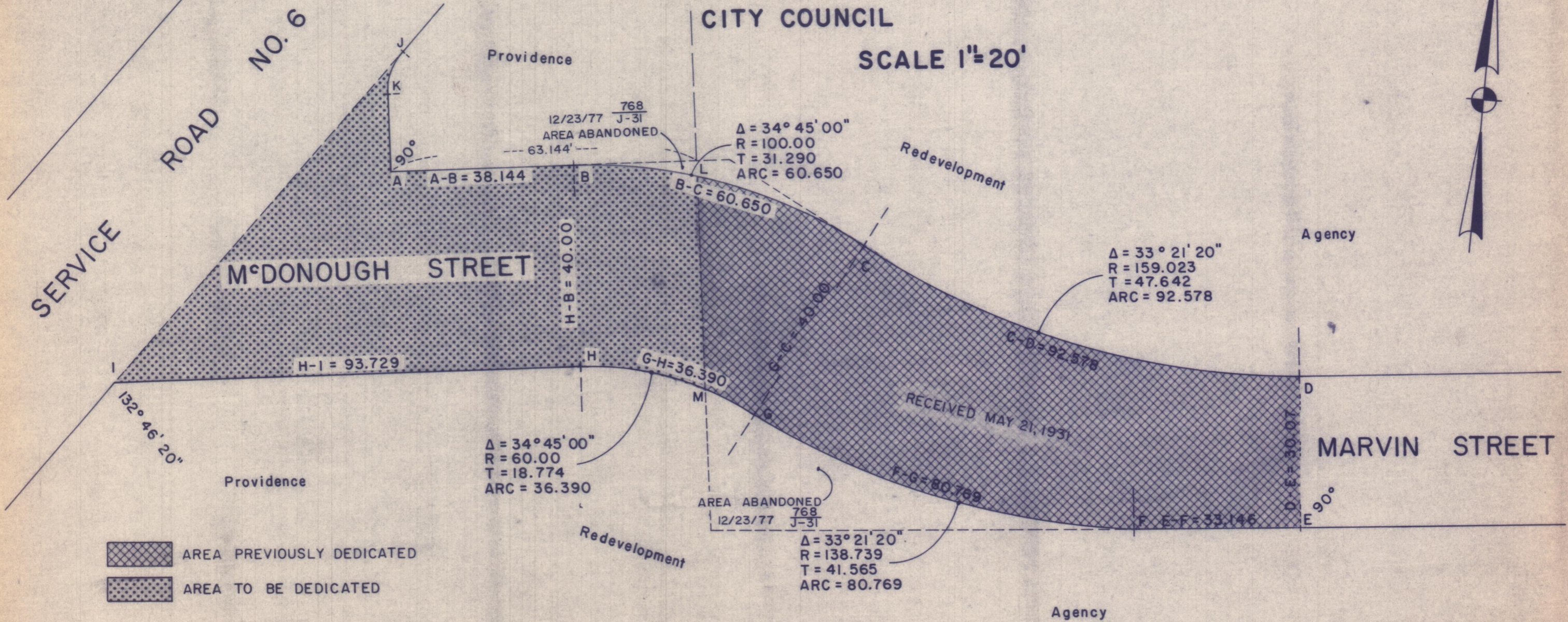




REGISTERED PROFESSIONAL ENGINEER

PLAT OF M^cDONOUGH STREET FROM SERVICE ROAD NO. 6 TO MARVIN STREET

CITY COUNCIL

SCALE 1"=20'



 AREA PREVIOUSLY DEDICATED
 AREA TO BE DEDICATED

89-B-8